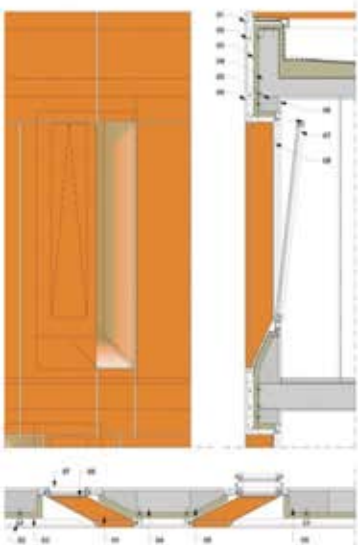


IIM 431E CONSTRUCTION PROJECT

2016 – 2017 FALL

"The joint, that is the fertile detail, is the place where both the construction and the construing of architecture take place."
"The Tell-the-Tale Detail" - Marco Frascari

Residential Building or Architecture
Workplace Design in Istanbul

AIM: The studio will help the students to develop a conceptual framework for the design that integrates many systems that comprise **architecture: cultural/contextual systems, site systems, environmental systems, material systems, structural systems, mechanical systems, program** etc. The technical requirements will include the **research, integration and representation** of the many technical systems inherent in this, and every, building project. It is expected that the **design** reach a level of detailed resolution in terms of the interrelation ship of **"form"** and **"construction"**. Main design issues to be focused on are **architectonics, sustainability**, and above all, **people's relation to the designed environment**, both the architecture and the landscape, which constitute the total designed environment with appropriate material selections by considering various criteria.

SUBJECT & PROCESS: In this studio we will explore the critical role of **tectonics in architecture / architectural technology**, and the **development of details** relative to an architectural concept. The vehicle for this exploration will be an architecture office/ home office building in Istanbul. From the home office to the enterprise, our environment affects the way we work as well as our productivity and the creativity. We are going to experience the technical design and expertise used in the application and integration of construction technologies in the building design process. During the design process we will try to answer the question; *"How can we create and produce exciting, challenging and inspiring forms, spaces and constructional details by using the materiality and the technology by integrating sustainable approaches?"*



Keywords that we must keep in mind during the design process are: **sustainability, advanced technologies, building system integration, high performance of the building systems - façade systems.**