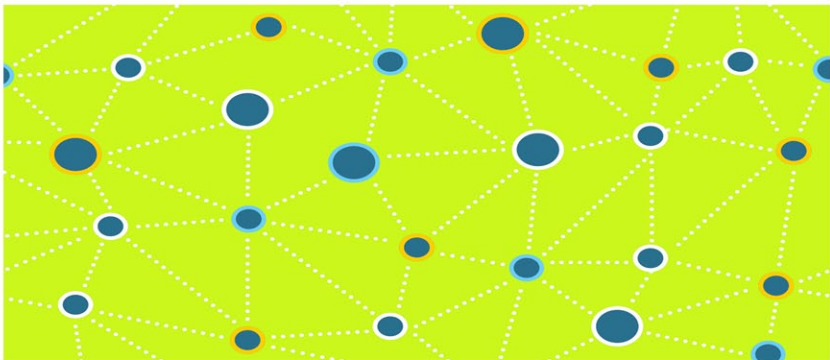


ASSOC. PROF. DR. **FATMA ERKÖK**
RES. ASSIST. **SALME GUMUSTAS**

networked city:
RE-STRUCTURING THE SPATIAL
CONNECTIONS BETWEEN
TRANSPORTATION NODES IN PUBLIC
SPACE



ANALYZING
TRANSPORTATION
NETWORKS,
MOVEMENTS AND
FLOWS AT CHOSEN
AREAS IN ISTANBUL
» RETHINKING
STATIONS AND
RELATIONS /
DISCONNECTIONS
BETWEEN THEM »
TREATING
DISCONNECTIONS BY
PROPOSING NEW
FUNCTIONS WITH
NEW SPATIALITIES »
DEVELOPING
CREATIVE IDEAS
FOR THE PUBLIC
SPACE